

B+G CONTOUR SEAT

Seating » Seats



Collections: **Contour**

Designed By: **Botton + Gardiner**

Applications: **Indoor, Outdoor**

B+G CONTOUR SEAT

Seating » Seats



B+G CONTOUR SEAT

Seating » Seats



B+G CONTOUR SEAT

Seating » Seats



Armrest side view

B+G CONTOUR SEAT

Seating » Seats

Contemporary seat design with rounded details. Hardwood or Duraslat battens with a cast aluminium frame in 17 powder-coat colours or satin finish.

- ✓ **Advanced Protective Topcoat**
 - ✓ **Cost Effective**
 - ✓ **Anti-Microbial**
 - ✓ **Absorbs Noise**
-

Description

With unifying, considered design details, the Contour seat forms part of the contemporary Contour range of commercial outdoor furniture to suit diverse needs and environments. Featuring fluid forms that reference soft, rounded, naturally occurring shapes, the Contour seat complements the collection of seating and table settings that can be arranged in multiple ways to create engaging public spaces. With optional armrests for greater comfort and finishes that include hard-wearing Eucalyptus or Duraslat battens with a cast aluminium frame in 17 powder-coat colours or a satin finish, Contour is made to stand the test of time.

Sustainability

Certified Hardwood

Australian Eucalyptus hardwood is sourced from sustainable forests certified by the Program for the Endorsement of Forest Certification (PEFC), the world's largest forestry certification system.

Material Alternatives

We offer sustainable alternatives to hardwood, such as Duraslat™; a mineral-based composite material that contains no Volatile Organic Compounds (VOCs) and is engineered using up to 46% natural filler that is based on a renewable mineral.

Recycled Materials

We locally source our steel. It means we know it uses recycled content and is 100% recyclable.

Low Pollutants

Our powder-coating process doesn't emit VOCs and has Environmental Product Declarations (EPDs) that enable projects to qualify for LEED credits.

B+G CONTOUR SEAT

Seating » Seats

Powder Coat	Core White (satin), Black (satin), Charcoal (satin), Silver Pearl (satin metallic), Coreten (textured) Signature Deep Ocean (satin), Wedgewood (satin), Mangrove (satin), Territory Red (matt), Claypot (satin), Paperbark (satin) Bold Sky Blue (satin), Yellow Green (satin), Pure Orange (satin), Carmine Red (satin), Zinc Yellow (satin)
-------------	--

Dimensions	Hardwood 70.8"W x 22.4"D x 31.1"H (1800mmW x 570mmD x 790mmH) Duraslat™ 70.8"W x 22.4"D x 31.1"H (1800mmW x 570mmD x 790mmH) Seat height: 17.7" (450mm)
------------	---

Batten Type	Hardwood Australian Eucalyptus Duraslat™ Plateau, Summit, Canyon, Outback
-------------	--

Frame	Cast aluminium in powder-coat or satin finish Armrest Cast aluminium in powder-coat or satin finish
-------	---

Made In	USA
---------	-----

Lead Time	6-8 weeks
-----------	-----------

Assembly & Delivery	Shipped fully assembled on pallets.
---------------------	-------------------------------------

Fixing Detail	Fixed or Freestanding. Surface fixed by others. Anchors not included.
---------------	--

B+G CONTOUR SEAT

Seating » Seats

Care Instructions

Hardwood

Cleaning

Remove any loose surface deposits with a soft bristled brush and wipe down with fresh water and a non-abrasive cloth.

Oiling

Oiling of timber will postpone natural greying, repel moisture, improve mould resistance, help maintain a smooth surface texture and enhance the grain and colour.

To maintain, lightly sand rough areas of timber and brush on one coat of timber decking oil every 6 months or as required.

Duraslat™

Cleaning

Clean with mild soap and water and use a soft brush to remove any dirt build-up.

Powder-Coat

Cleaning

Carefully remove any loose surface deposits with a wet sponge or soft bristled brush.

Use a soft (non-abrasive) cloth or brush and a diluted solution of mild detergent and warm water.

Ensure surfaces are thoroughly rinsed with clean fresh water after cleaning to remove all residues.

Never use thinners, abrasive cleaning agents, alcohol-based, acid or alkali cleaning agents.

Warranty

5-year warranty. View the [warranty](#) for more details.

Customisable

As this item is made to order locally, custom lengths are available on request.

Additional Comments

Hardwood is treated with a UV-resistant oil finish.

Considered design details include concealed fixings and integrated anchor points for clean lines.

How to Specify

Select your batten finish

Select your frame finish

Select your fixing type

B+G CONTOUR SEAT

Seating » Seats

Colour & Finish Options

B+G USA Hardwood



Australian
Eucalyptus Light Oil



Australian
Eucalyptus Dark Oil

B+G USA Duraslat



Tundra



Outback



Canyon



Summit

B+G AUS Powdercoats



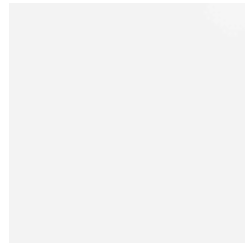
Black (satin)



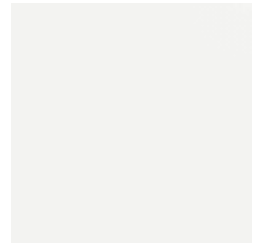
Charcoal (satin)



Palladium Silver



Pearl White



White (satin)



Coffee



Cove



Medium Bronze
Kinetic (flat)



Asteroid



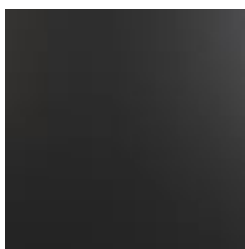
Bass

B+G CONTOUR SEAT

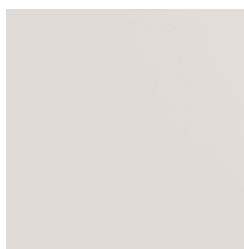
Seating » Seats



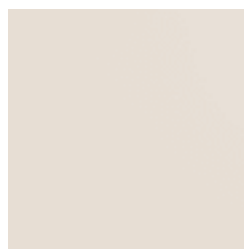
Core Ten



Textura Black



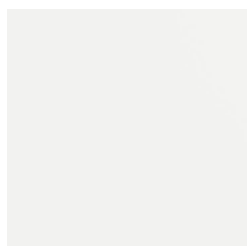
Dune



Primrose



Textura Monument



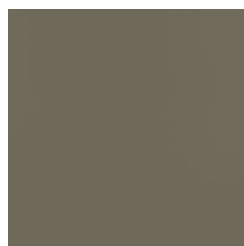
Textura White
(textured)



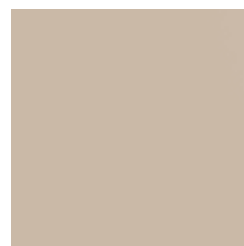
Claypot



Deep Ocean



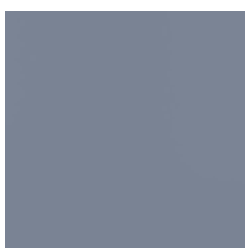
Mangrove



Paper Bark



Territory Red



Wedgewood



Bondi Blue



Leaf



Lobster



Moonlight



Sensation