

# B+G ALFRESCO BENCH

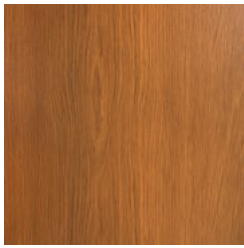
Seating » Benches



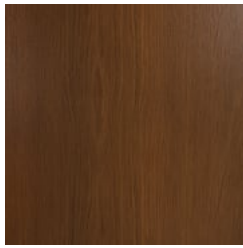
Collection: **Alfresco**

# B+G ALFRESCO BENCH

Seating » Benches



Hardwood Australian  
Eucalyptus Light Oil



Hardwood Australian  
Eucalyptus Dark Oil



Duraslat™ Plateau



Duraslat™ Summit



Duraslat™ Canyon



Duraslat™ Outback



Core Powder-Coat  
Coreten Textured



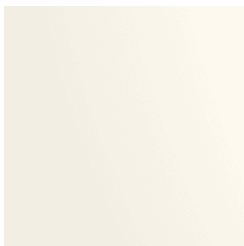
Core Powder-Coat  
Charcoal Satin



Core Powder-Coat  
Silver Pearl Satin  
Metallic



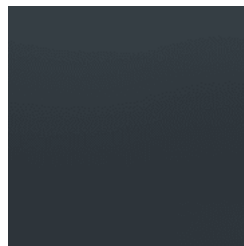
Core Powder-Coat  
Black Satin



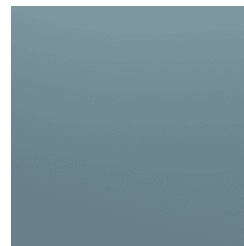
Core Powder-Coat  
White Satin



Core Powder-Coat  
Bronze Satin Metallic



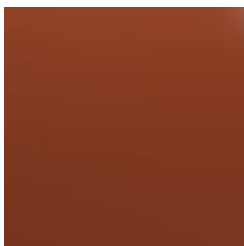
Signature Powder-  
Coat Deep Ocean  
Satin



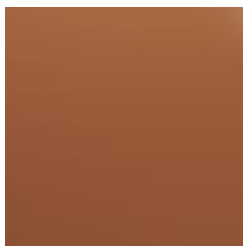
Signature Powder-  
Coat Wedgewood  
Satin



Signature Powder-  
Coat Mangrove Satin



Signature Powder-  
Coat Territory Red  
Matt



Signature Powder-  
Coat Claypot Satin



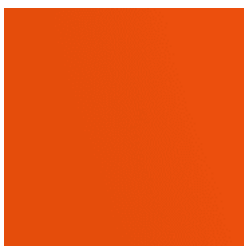
Signature Powder-  
Coat Paperbark Satin



Bold Powder-Coat  
Sky Blue Satin



Bold Powder-Coat  
Yellow Green Satin



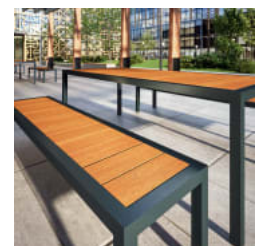
Bold Powder-Coat  
Pure Orange Satin



Bold Powder-Coat  
Carmine Red Satin



Bold Powder-Coat  
Zinc Yellow Satin



# B+G ALFRESCO BENCH

Seating » Benches



# B+G ALFRESCO BENCH

Seating » Benches

Contemporary bench seating. Light in scale. Battens in 2 hardwood or 4 Duraslat™ colors and slim-line steel frame in 17 powder-coat finishes.

**Description** Slim-line, powder-coated steel framing together with linear Australian Eucalyptus hardwood or Duraslat™ battens provide the Alfresco bench with a contemporary aesthetic that is light in scale. As its name implies, Alfresco is suited to outdoor communal dining, ideal for educational or corporate campuses, bars, cafes, and restaurants.

**Made In** USA

**Dimensions** 67"W x 18"D x 18"H  
(1715mmW x 465mmD x 455mmH)

79"W x 18"D x 18"H  
(2005mmW x 465mmD x 455mmH)

91"W x 18"D x 18"H  
(2300mmW x 465mmD x 455mmH)

**Weight**

Hardwood  
67"W  
70.4lbs (32kg)  
79"W  
81.4lbs (37kg)  
91"W  
91.74lbs (41.7kg)

Duraslat™  
67"W  
58.3lbs (26.5kg)  
79"W  
66.44lbs (30.2kg)  
91"W  
74.58lbs (33.9kg)

**Batten Type** Hardwood  
Australian Eucalyptus

Duraslat™  
Plateau, Summit, Canyon, Outback

**Frame** Powder-coated steel

# B+G ALFRESCO BENCH

Seating » Benches

---

## Powder Coat

### Core

Coreten (textured), Charcoal (satin), Silver Pearl (satin metallic), Black (satin), White (satin), Bronze (satin metallic)

### Signature

Deep Ocean (satin), Wedgewood (satin), Mangrove (satin), Territory Red (matt), Claypot (satin), Paperbark (satin)

### Bold

Sky Blue (satin), Yellow Green (satin), Pure Orange (satin), Carmine Red (satin), Zinc Yellow (satin)

---

## Sustainability

### Certified Hardwood

Australian Eucalyptus hardwood is sourced from sustainable forests certified by the Program for the Endorsement of Forest Certification (PEFC), the world's largest forestry certification system.

### Material Alternatives

We offer sustainable alternatives to hardwood, such as Duraslat™; a mineral-based composite material that contains no Volatile Organic Compounds (VOCs) and is engineered using up to 46% natural filler that is based on a renewable mineral.

### Recycled Materials

We locally source our steel. It means we know it uses recycled content and is 100% recyclable.

### Low Pollutants

Our powder-coating process doesn't emit VOCs and has Environmental Product Declarations (EPDs) that enable projects to qualify for LEED credits.

---

## Warranty

5-year warranty. View the [warranty](#) for more details.

---

## Lead Time

6-8 weeks

---

## Assembly & Delivery

Shipped fully assembled on pallets.

---

## Fixing Detail

Freestanding. Optional floor fixing tabs.

---

## How to Specify

Select your length  
Select your batten finish  
Select your frame finish  
Select your fixing type

---



# B+G ALFRESCO BENCH

Seating » Benches

---

## Care Instructions

### Hardwood

#### Cleaning

Remove any loose surface deposits with a soft bristled brush and wipe down with fresh water and a non-abrasive cloth.

#### Oiling

Oiling of timber will postpone natural greying, repel moisture, improve mould resistance, help maintain a smooth surface texture and enhance the grain and colour.

To maintain, lightly sand rough areas of timber and brush on one coat of timber decking oil every 6 months or as required.

### Duraslat™

#### Cleaning

Clean with mild soap and water and use a soft brush to remove any dirt build-up.

### Powder-Coat

#### Cleaning

Carefully remove any loose surface deposits with a wet sponge or soft bristled brush.

Use a soft (non-abrasive) cloth or brush and a diluted solution of mild detergent and warm water.

Ensure surfaces are thoroughly rinsed with clean fresh water after cleaning to remove all residues.

Never use thinners, abrasive cleaning agents, alcohol-based, acid or alkali cleaning agents.

---

## Additional Comments

Hardwood is treated with a UV-resistant oil finish in a light or dark tone.

---