

B+G VERGE BENCH

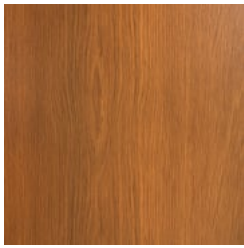
Seating » Benches



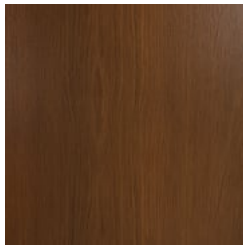
Collection: **Verge**

B+G VERGE BENCH

Seating » Benches



Hardwood Australian
Eucalyptus Light Oil



Hardwood Australian
Eucalyptus Dark Oil



Duraslat™ Plateau



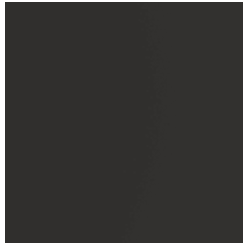
Duraslat™ Summit



Duraslat™ Canyon



Duraslat™ Outback



Core Powder-Coat
Charcoal Satin



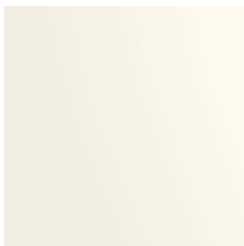
Core Powder-Coat
Coreten Textured



Core Powder-Coat
Silver Pearl Satin
Metallic



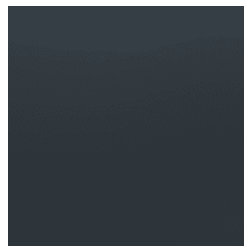
Core Powder-Coat
Black Satin



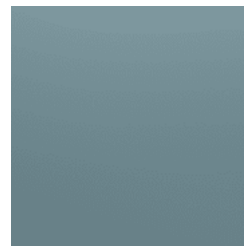
Core Powder-Coat
White Satin



Core Powder-Coat
Bronze Satin Metallic



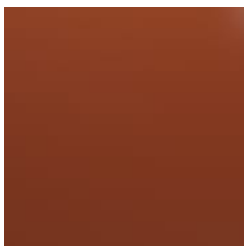
Signature Powder-
Coat Deep Ocean
Satin



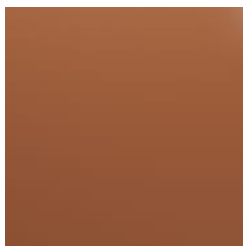
Signature Powder-
Coat Wedgewood
Satin



Signature Powder-
Coat Mangrove Satin



Signature Powder-
Coat Territory Red
Matt



Signature Powder-
Coat Claypot Satin



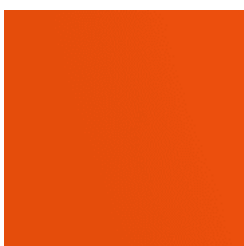
Signature Powder-
Coat Paperbark Satin



Bold Powder-Coat
Sky Blue Satin



Bold Powder-Coat
Yellow Green Satin



Bold Powder-Coat
Pure Orange Satin



Bold Powder-Coat
Carmine Red Satin



Bold Powder-Coat
Zinc Yellow Satin



B+G VERGE BENCH

Seating » Benches



B+G VERGE BENCH

Seating » Benches

Simple, durable bench design. Batten top in 2 hardwood or 4 Duraslat colors with steel posts and base plates in 17 powder-coat or galvanized finishes.

Description The Verge bench is simple in design and highly durable. Hardwood or Duraslat™ battens work with cylindrical steel posts and circular base plates to add a functional and utilitarian feel to spaces you know are going to get their fair share of wear and tear. Finishes include 2 Australian Eucalyptus hardwood or 4 Duraslat™ colors and 17 powder-coat finishes or a galvanized finish.

Made In USA

Dimensions

Hardwood
71"W x 17"D x 18"H
(1800mmW x 430mmD x 455mmH)

Duraslat™
71"W x 17"D x 18"H
(1800mmW x 430mmD x 450mmH)

Hardwood
83"W x 17"D x 18"H
(2100mmW x 430mmD x 455mmH)

Duraslat™
83"W x 17"D x 18"H
(2100mmW x 430mmD x 450mmH)

Weight

Hardwood
71"W
66lbs (30kg)
83"W
74.8lbs (34kg)

Duraslat™
71"W
66lbs (30kg)
83"W
77lbs (35kg)

Batten Type

Hardwood
Australian Eucalyptus

Duraslat™
Plateau, Summit, Canyon, Outback

Frame Powder-coated steel or galvanized steel

B+G VERGE BENCH

Seating » Benches

Powder Coat

Core

Coreten (textured), Charcoal (satin), Silver Pearl (satin metallic), Black (satin), White (satin), Bronze (satin metallic)

Signature

Deep Ocean (satin), Wedgewood (satin), Mangrove (satin), Territory Red (matt), Claypot (satin), Paperbark (satin)

Bold

Sky Blue (satin), Yellow Green (satin), Pure Orange (satin), Carmine Red (satin), Zinc Yellow (satin)

Sustainability

Certified Hardwood

Australian Eucalyptus hardwood is sourced from sustainable forests certified by the Program for the Endorsement of Forest Certification (PEFC), the world's largest forestry certification system.

Material Alternatives

We offer sustainable alternatives to hardwood, such as Duraslat™; a mineral-based composite material that contains no Volatile Organic Compounds (VOCs) and is engineered using up to 46% natural filler that is based on a renewable mineral.

Recycled Materials

We locally source our steel. It means we know it uses recycled content and is 100% recyclable.

Low Pollutants

Our powder-coating process doesn't emit VOCs and has Environmental Product Declarations (EPDs) that enable projects to qualify for LEED credits.

Warranty

5-year warranty. View the [warranty](#) for more details.

Lead Time

6-8 weeks

Assembly & Delivery

Shipped fully assembled on pallets.

Fixing Detail

Post fixed by others - surface fixed.
Anchors not included.

How to Specify

Select your length
Select your batten finish
Select your frame finish
Select your fixing type

B+G VERGE BENCH

Seating » Benches

Care Instructions

Hardwood

Cleaning

Remove any loose surface deposits with a soft bristled brush and wipe down with fresh water and a non-abrasive cloth.

Oiling

Oiling of timber will postpone natural greying, repel moisture, improve mould resistance, help maintain a smooth surface texture and enhance the grain and colour.

To maintain, lightly sand rough areas of timber and brush on one coat of timber decking oil every 6 months or as required.

Duraslat™

Cleaning

Clean with mild soap and water and use a soft brush to remove any dirt build-up.

Powder-Coat

Cleaning

Carefully remove any loose surface deposits with a wet sponge or soft bristled brush.

Use a soft (non-abrasive) cloth or brush and a diluted solution of mild detergent and warm water.

Ensure surfaces are thoroughly rinsed with clean fresh water after cleaning to remove all residues.

Never use thinners, abrasive cleaning agents, alcohol-based, acid or alkali cleaning agents.

Additional Comments

Hardwood is treated with a UV-resistant oil finish in a light or dark tone.
