

B+G URBAN CURVED BENCH

Seating » Benches



Collection: **Urban**

B+G URBAN CURVED BENCH

Seating » Benches



Hardwood Australian Eucalyptus Light Oil



Hardwood Australian Eucalyptus Dark Oil



Duraslat™ Plateau



Duraslat™ Summit



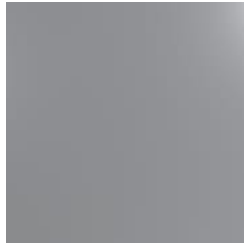
Duraslat™ Canyon



Duraslat™ Outback



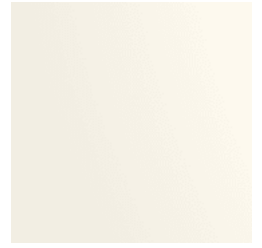
Core Powder-coat Charcoal Satin



Core Powder-coat Silver Pearl Satin Metallic



Core Powder-coat Black Satin



Core Powder-coat White Satin



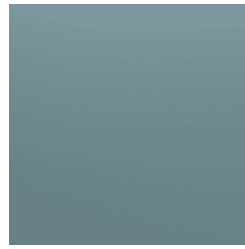
Core Powder-coat Coreten Textured



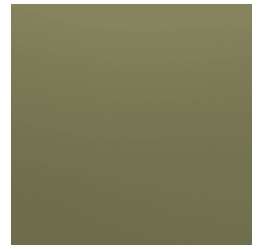
Core Powder-coat Bronze Satin Metallic



Signature Powder-Coat Deep Ocean Satin



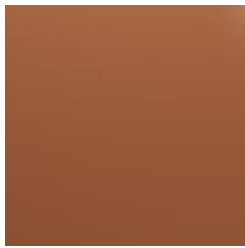
Signature Powder-Coat Wedgewood Satin



Signature Powder-Coat Mangrove Satin



Signature Powder-Coat Territory Red Matt



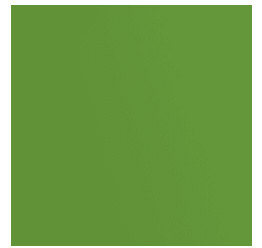
Signature Powder-Coat Claypot Satin



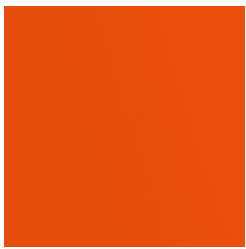
Signature Powder-Coat Paperbark Satin



Bold Powder-coat Sky Blue Satin



Bold Powder-coat Yellow Green Satin



Bold Powder-coat Pure Orange Satin



Bold Powder-coat Carmine Red Satin



Bold Powder-coat Zinc Yellow Satin



B+G URBAN CURVED BENCH

Seating » Benches



B+G URBAN CURVED BENCH

Seating » Benches

Timeless curved bench design. Batten top in 2 hardwood or 4 Duraslat™ colors supported by an elegant cast aluminum frame in 17 powder-coat finishes.

Description	Referencing Paris's famous wrought ironwork, curved cast aluminum framing is complemented by muscular hardwood or Duraslat™ surfaces to offer a timeless Urban curved seat. The modularity allows for snaking curve, full ring or shallow bend configurations to be created to break up linear spaces. It is ideal for seating around trees, along curved garden beds and walls. Finishes include 2 Australian Eucalyptus hardwood or 4 Duraslat™ colors and 17 powder-coat finishes or a natural aluminum finish. Urban is close to our heart; a classic, elegant, and highly functional collection that works in almost any public space.
Made In	USA
Dimensions	79" arc x 17"H (2000mm arc x 435mmH) Standard arc length: 79" (2000mm) Standard radius: 79" (2000mm) Seat depth: 17" (420mm) Seat height: 17" (440mm)
Weight	Hardwood 88lbs (40kg) Duraslat™ 76lbs (34kg)
Batten Type	Hardwood Australian Eucalyptus Duraslat™ Plateau, Summit, Canyon, Outback
Frame	Cast aluminum in a powder-coat or natural aluminum finish

B+G URBAN CURVED BENCH

Seating » Benches

Powder Coat

Core

Coreten (textured), Charcoal (satin), Silver Pearl (satin metallic), Black (satin), White (satin), Bronze (satin metallic)

Signature

Deep Ocean (satin), Wedgewood (satin), Mangrove (satin), Territory Red (matt), Claypot (satin), Paperbark (satin)

Bold

Sky Blue (satin), Yellow Green (satin), Pure Orange (satin), Carmine Red (satin), Zinc Yellow (satin)

Sustainability

Certified Hardwood

Australian Eucalyptus hardwood is sourced from sustainable forests certified by the Program for the Endorsement of Forest Certification (PEFC), the world's largest forestry certification system.

Material Alternatives

We offer sustainable alternatives to hardwood, such as Duraslat™; a mineral-based composite material that contains no Volatile Organic Compounds (VOCs) and is engineered using up to 46% natural filler that is based on a renewable mineral.

Recycled Materials

We locally source our steel. It means we know it uses recycled content and is 100% recyclable.

Low Pollutants

Our powder-coating process doesn't emit VOCs and has Environmental Product Declarations (EPDs) that enable projects to qualify for LEED credits.

Warranty

5-year warranty. View the [warranty](#) for more details.

Lead Time

6-8 weeks

Assembly & Delivery

Shipped fully assembled on pallets.

Fixing Detail

Post fixed by others - surface fixed.
Anchors not included.

How to Specify

Select your arc length
Specify your radius
Select your batten finish
Select your frame finish
Select your fixing type

B+G URBAN CURVED BENCH

Seating » Benches

Care Instructions

Hardwood

Cleaning

Remove any loose surface deposits with a soft bristled brush and wipe down with fresh water and a non-abrasive cloth.

Oiling

Oiling of timber will postpone natural greying, repel moisture, improve mould resistance, help maintain a smooth surface texture and enhance the grain and colour.

To maintain, lightly sand rough areas of timber and brush on one coat of timber decking oil every 6 months or as required.

Duraslat™

Cleaning

Clean with mild soap and water and use a soft brush to remove any dirt build-up.

Powder-Coat

Cleaning

Carefully remove any loose surface deposits with a wet sponge or soft bristled brush.

Use a soft (non-abrasive) cloth or brush and a diluted solution of mild detergent and warm water.

Ensure surfaces are thoroughly rinsed with clean fresh water after cleaning to remove all residues.

Never use thinners, abrasive cleaning agents, alcohol-based, acid or alkali cleaning agents.

Additional Comments

Hardwood is treated with a UV-resistant oil finish in a light or dark tone.
