

# B+G TERRAIN PLINTH SEAT

Seating » Seats



Collection: **Terrain**

# B+G TERRAIN PLINTH SEAT

Seating » Seats



Hardwood Australian Eucalyptus Light Oil



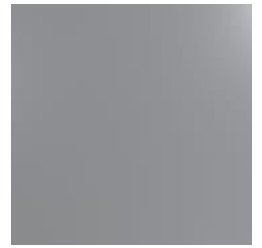
Hardwood Australian Eucalyptus Dark Oil



Core Powder-Coat Coreten Textured



Core Powder-Coat Charcoal Satin



Core Powder-Coat Silver Pearl Satin Metallic



Core Powder-Coat Black Satin



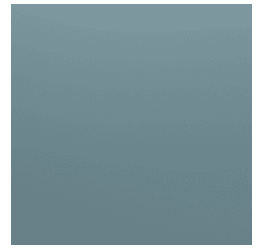
Core Powder-Coat White Satin



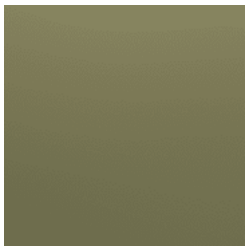
Core Powder-Coat Bronze Satin Metallic



Signature Powder-Coat Deep Ocean Satin



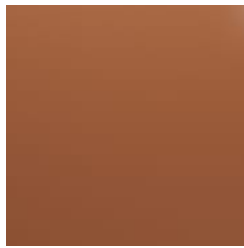
Signature Powder-Coat Wedgewood Satin



Signature Powder-Coat Mangrove Satin



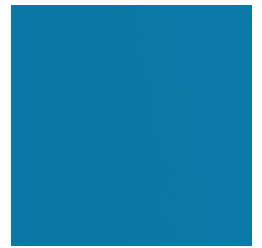
Signature Powder-Coat Territory Red Matt



Signature Powder-Coat Claypot Satin



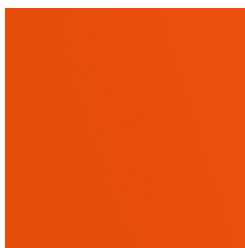
Signature Powder-Coat Paperbark Satin



Bold Powder-Coat Sky Blue Satin



Bold Powder-Coat Yellow Green Satin



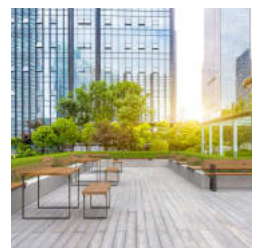
Bold Powder-Coat Pure Orange Satin



Bold Powder-Coat Carmine Red Satin



Bold Powder-Coat Zinc Yellow Satin



# B+G TERRAIN PLINTH SEAT

Seating » Seats

---



# B+G TERRAIN PLINTH SEAT

Seating » Seats

Contemporary wall-mounted seating with backrest. Trapezoidal, hardwood battens in 2 colors. Sleek steel frame in 17 zinc-primed powder-coat finishes.

Description	The juxtaposition of solid, hardwood battens and a sleek steel frame is unified with trapezoidal design elements that add strength and visual appeal to the Terrain plinth seat. Finishes include 2 Australian Eucalyptus hardwood and 17 zinc-primed powder-coat colors. Terrain is a high-quality collection that adds a robust, contemporary feel to public spaces.
Made In	USA
Dimensions	83"W x 24"D x 16"H (2100mmW x 600mmD x 410mmH)  Recommended installed seat height: 17" (440mmH)
Weight	176lbs (80kg)
Batten Type	Hardwood: Australian Eucalyptus
Frame	Powder-coated, zinc-primed steel
Powder Coat	Core Coreten (textured), Charcoal (satin), Silver Pearl (satin metallic), Black (satin), White (satin), Bronze (satin metallic)  Signature Deep Ocean (satin), Wedgewood (satin), Mangrove (satin), Territory Red (matt), Claypot (satin), Paperbark (satin)  Bold Sky Blue (satin), Yellow Green (satin), Pure Orange (satin), Carmine Red (satin), Zinc Yellow (satin)

# B+G TERRAIN PLINTH SEAT

Seating » Seats

---

## Sustainability

### Certified Hardwood

Australian Eucalyptus hardwood is sourced from sustainable forests certified by the Program for the Endorsement of Forest Certification (PEFC), the world's largest forestry certification system.

### Recycled Materials

We locally source our steel. It means we know it uses recycled content and is 100% recyclable.

### Low Pollutants

Our powder-coating process doesn't emit Volatile Organic Compounds (VOCs) and has Environmental Product Declarations (EPDs) that enable projects to qualify for LEED credits.

---

## Warranty

5-year warranty. View the [warranty](#) for more details.

---

## Lead Time

6-8 weeks

---

## Assembly & Delivery

Shipped fully assembled on pallets.

---

## Fixing Detail

Fixed by others to an existing plinth.  
Anchors not included.

---

## How to Specify

Select your batten finish  
Select your frame finish

---

# B+G TERRAIN PLINTH SEAT

Seating » Seats

---

## Care Instructions

### Hardwood

#### Cleaning

Remove any loose surface deposits with a soft bristled brush and wipe down with fresh water and a non-abrasive cloth.

#### Oiling

Oiling of timber will postpone natural greying, repel moisture, improve mould resistance, help maintain a smooth surface texture and enhance the grain and colour.

To maintain, lightly sand rough areas of timber and brush on one coat of timber decking oil every 6 months or as required.

### Powder-Coat

#### Cleaning

Carefully remove any loose surface deposits with a wet sponge or soft bristled brush.

Use a soft (non-abrasive) cloth or brush and a diluted solution of mild detergent and warm water.

Ensure surfaces are thoroughly rinsed with clean fresh water after cleaning to remove all residues.

Never use thinners, abrasive cleaning agents, alcohol-based, acid or alkali cleaning agents.

---

## Additional Comments

Hardwood is treated with a UV-resistant oil finish in a light or dark tone. Battens feature a trapezoidal profile.

---