

B+G TERRAIN BENCH

Seating » Benches



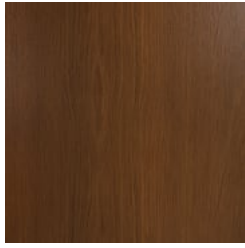
Collection: **Terrain**

B+G TERRAIN BENCH

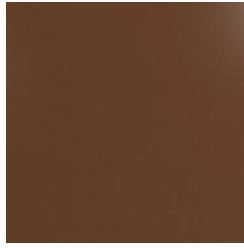
Seating » Benches



Hardwood Australian Eucalyptus Light Oil



Hardwood Australian Eucalyptus Dark Oil



Core Powder-Coat Coreten Textured



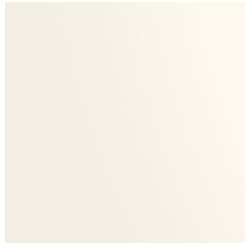
Core Powder-Coat Charcoal Satin



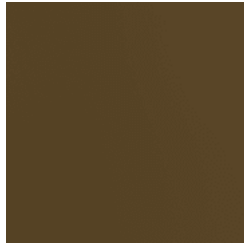
Core Powder-Coat Silver Pearl Satin Metallic



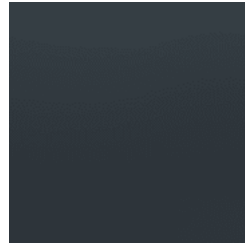
Core Powder-Coat Black Satin



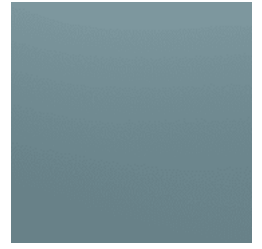
Core Powder-Coat White Satin



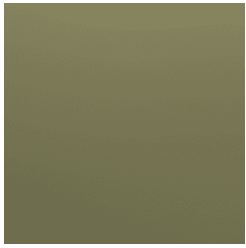
Core Powder-Coat Bronze Satin Metallic



Signature Powder-Coat Deep Ocean Satin



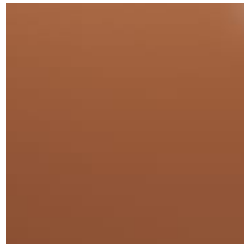
Signature Powder-Coat Wedgewood Satin



Signature Powder-Coat Mangrove Satin



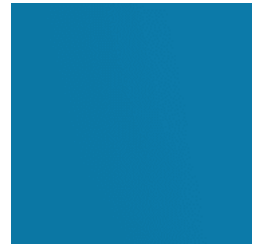
Signature Powder-Coat Territory Red Matt



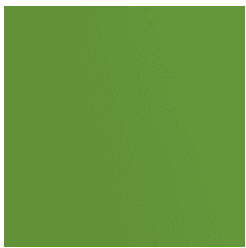
Signature Powder-Coat Claypot Satin



Signature Powder-Coat Paperbark Satin



Bold Powder-Coat Sky Blue Satin



Bold Powder-coat Yellow Green Satin



Bold Powder-coat Pure Orange Satin



Bold Powder-coat Carmine Red Satin



Bold Powder-Coat Zinc Yellow Satin



B+G TERRAIN BENCH

Seating » Benches



B+G TERRAIN BENCH

Seating » Benches

Contemporary, robust bench design. Solid, trapezoidal, hardwood battens in 2 colors with a sleek steel frame in 17 zinc-primed powder-coat finishes.

Description	The juxtaposition of solid, hardwood battens and a sleek steel frame is unified with trapezoidal design elements that add strength and visual appeal to the Terrain bench. Finishes include 2 Australian Eucalyptus hardwood and 17 zinc-primed powder-coat colors. Terrain is a high-quality collection that adds a robust, contemporary feel to public spaces.
Made In	USA
Dimensions	83"W x 15"D x 17"H (2100mmW x 390mmD x 440mmH)
Weight	125.4lbs (57kg)
Batten Type	Hardwood: Australian Eucalyptus
Frame	Powder-coated, zinc-primed steel
Powder Coat	<p>Core Coreten (textured), Charcoal (satin), Silver Pearl (satin metallic), Black (satin), White (satin), Bronze (satin metallic)</p> <p>Signature Deep Ocean (satin), Wedgewood (satin), Mangrove (satin), Territory Red (matt), Claypot (satin), Paperbark (satin)</p> <p>Bold Sky Blue (satin), Yellow Green (satin), Pure Orange (satin), Carmine Red (satin), Zinc Yellow (satin)</p>
Sustainability	<p>Certified Hardwood Australian Eucalyptus hardwood is sourced from sustainable forests certified by the Program for the Endorsement of Forest Certification (PEFC), the world's largest forestry certification system.</p> <p>Recycled Materials We locally source our steel. It means we know it uses recycled content and is 100% recyclable.</p> <p>Low Pollutants Our powder-coating process doesn't emit Volatile Organic Compounds (VOCs) and has Environmental Product Declarations (EPDs) that enable projects to qualify for LEED credits.</p>

B+G TERRAIN BENCH

Seating » Benches

Warranty 5-year warranty. View the [warranty](#) for more details.

Lead Time 6-8 weeks

Assembly & Delivery Shipped fully assembled on pallets.

Fixing Detail Freestanding or surface fixed by others. Anchors not included.

How to Specify
Select your batten finish
Select your frame finish

Care Instructions

Hardwood
Cleaning
Remove any loose surface deposits with a soft bristled brush and wipe down with fresh water and a non-abrasive cloth.

Oiling
Oiling of timber will postpone natural greying, repel moisture, improve mould resistance, help maintain a smooth surface texture and enhance the grain and colour.

To maintain, lightly sand rough areas of timber and brush on one coat of timber decking oil every 6 months or as required.

Powder-Coat
Cleaning
Carefully remove any loose surface deposits with a wet sponge or soft bristled brush.

Use a soft (non-abrasive) cloth or brush and a diluted solution of mild detergent and warm water.

Ensure surfaces are thoroughly rinsed with clean fresh water after cleaning to remove all residues.

Never use thinners, abrasive cleaning agents, alcohol-based, acid or alkali cleaning agents.

Additional Comments Hardwood is treated with a UV-resistant oil finish in a light or dark tone. Battens feature a trapezoidal profile.
