

# B+G MANLY SINGLE POST LITTER BIN

Litter Bins » Single Bins



Collection: **Manly**

# B+G MANLY SINGLE POST LITTER BIN

Litter Bins » Single Bins



Hardwood Australian Eucalyptus Light Oil



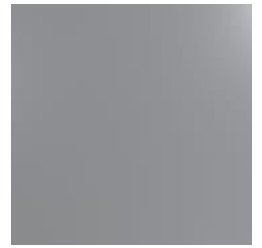
Hardwood Australian Eucalyptus Dark Oil



Core Powder-Coat Coreten Textured



Core Powder-Coat Charcoal Satin



Core Powder-Coat Silver Pearl Satin Metallic



Core Powder-Coat Black Satin



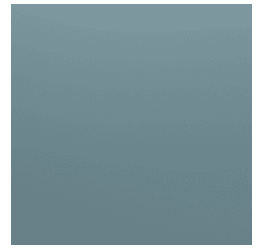
Core Powder-Coat White Satin



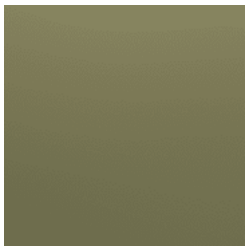
Core Powder-Coat Bronze Satin Metallic



Signature Powder-Coat Deep Ocean Satin



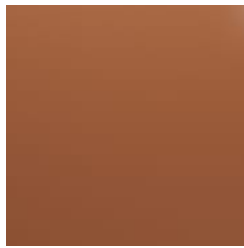
Signature Powder-Coat Wedgewood Satin



Signature Powder-Coat Mangrove Satin



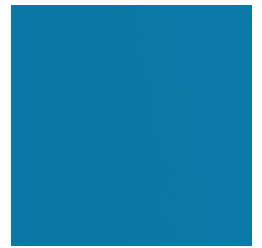
Signature Powder-Coat Territory Red Matt



Signature Powder-Coat Claypot Satin



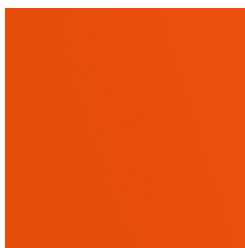
Signature Powder-Coat Paperbark Satin



Bold Powder-Coat Sky Blue Satin



Bold Powder-Coat Yellow Green Satin



Bold Powder-Coat Pure Orange Satin



Bold Powder-Coat Carmine Red Satin



Bold Powder-Coat Zinc Yellow Satin



# B+G MANLY SINGLE POST LITTER BIN

Litter Bins » Single Bins

---



# B+G MANLY SINGLE POST LITTER BIN

Litter Bins » Single Bins

Modern, round single post litter bin with hood for outdoors. 360° panel design in 2 hardwood colors or cut-out designs in 17 powder-coat finishes.

Description	The contemporary, cylindrical design of the Manly single post litter bin creates a minimalist aesthetic that complements the curves of modern public spaces, indoors or out. Finishes include Australian Eucalyptus hardwood battens in 2 finishes, powder-coated steel using cut-out designs or plain in 17 colors. Manly is a versatile, eye-catching addition to public spaces that need to stand the test of time.
Made In	USA
Dimensions	Hardwood + Plain Panel ø26" x 37"H (ø650mm x 990mmH)  Perforated Panel ø26" x 37"H (ø650mm x 1000mmH)
Capacity	20 gal (80L)
Weight	Hardwood 161lbs (73kg)  Plain Panel 137lbs (62kg)  Perforated Panel 132lbs (60kg)
Batten Type	Hardwood: Australian Eucalyptus
Frame	Powder-coated steel
Powder Coat	Core Coreten (textured), Charcoal (satin), Silver Pearl (satin metallic), Black (satin), White (satin), Bronze (satin metallic)  Signature Deep Ocean (satin), Wedgewood (satin), Mangrove (satin), Territory Red (matt), Claypot (satin), Paperbark (satin)  Bold Sky Blue (satin), Yellow Green (satin), Pure Orange (satin), Carmine Red (satin), Zinc Yellow (satin)

# B+G MANLY SINGLE POST LITTER BIN

Litter Bins » Single Bins

---

**Signage** Vinyl decal signage for the flat lid on request.

---

**Sustainability**

**Certified Hardwood**  
Australian Eucalyptus hardwood is sourced from sustainable forests certified by the Program for the Endorsement of Forest Certification (PEFC), the world's largest forestry certification system.

**Recycled Materials**  
We locally source our steel. It means we know it uses recycled content and is 100% recyclable.

**Low Pollutants**  
Our powder-coating process doesn't emit Volatile Organic Compounds (VOCs) and has Environmental Product Declarations (EPDs) that enable projects to qualify for LEED credits.

---

**Warranty** 5-year warranty. View the [warranty](#) for more details.

---

**Lead Time** 6-8 weeks

---

**Assembly & Delivery** Shipped fully assembled on pallets.

---

**Fixing Detail** Post fixed by others - surface fixed.  
Anchors not included.

---

**How to Specify**

- Select your size - single
- Select your capacity - 20 gal (80L)
- Select your lid, hood and post color
- Select your panel design and finish
- Select your signage type
- Select your fixing type

---



# B+G MANLY SINGLE POST LITTER BIN

Litter Bins » Single Bins

---

## Care Instructions

### Hardwood

#### Cleaning

Remove any loose surface deposits with a soft bristled brush and wipe down with fresh water and a non-abrasive cloth.

#### Oiling

Oiling of timber will postpone natural greying, repel moisture, improve mould resistance, help maintain a smooth surface texture and enhance the grain and colour.

To maintain, lightly sand rough areas of timber and brush on one coat of timber decking oil every 6 months or as required.

### Powder-Coat

#### Cleaning

Carefully remove any loose surface deposits with a wet sponge or soft bristled brush.

Use a soft (non-abrasive) cloth or brush and a diluted solution of mild detergent and warm water.

Ensure surfaces are thoroughly rinsed with clean fresh water after cleaning to remove all residues.

Never use thinners, abrasive cleaning agents, alcohol-based, acid or alkali cleaning agents.

---

## Additional Comments

Panel designs available in hardwood battens or powder-coated steel in plain or perforated cut-out designs.

Hardwood is treated with a UV-resistant oil finish in a light or dark tone.

Compression lock prevents door rattling.

---